

COMELZ_ITALIA

SS20

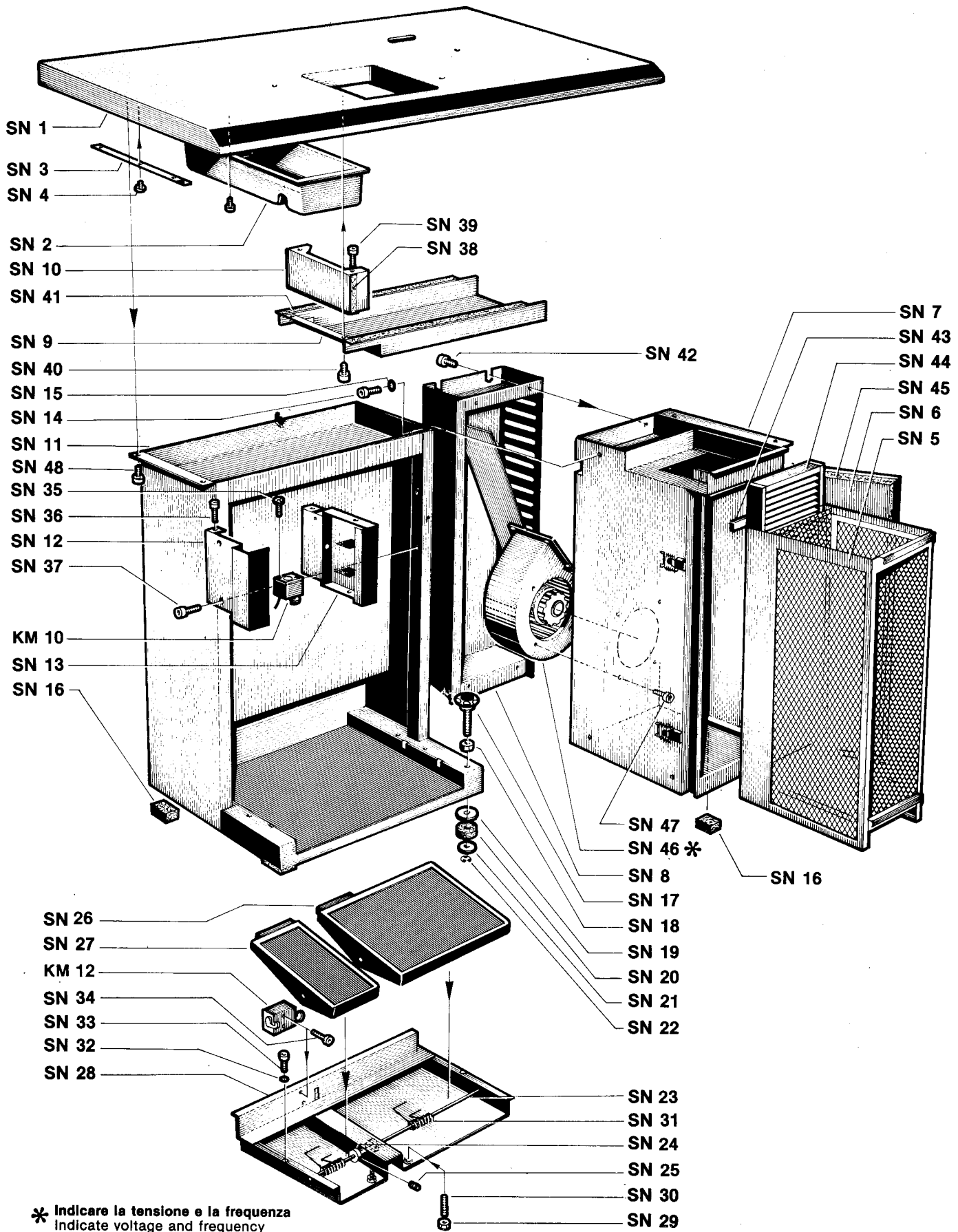
PARTI DI
RICAMBIO

SPARE
PARTS

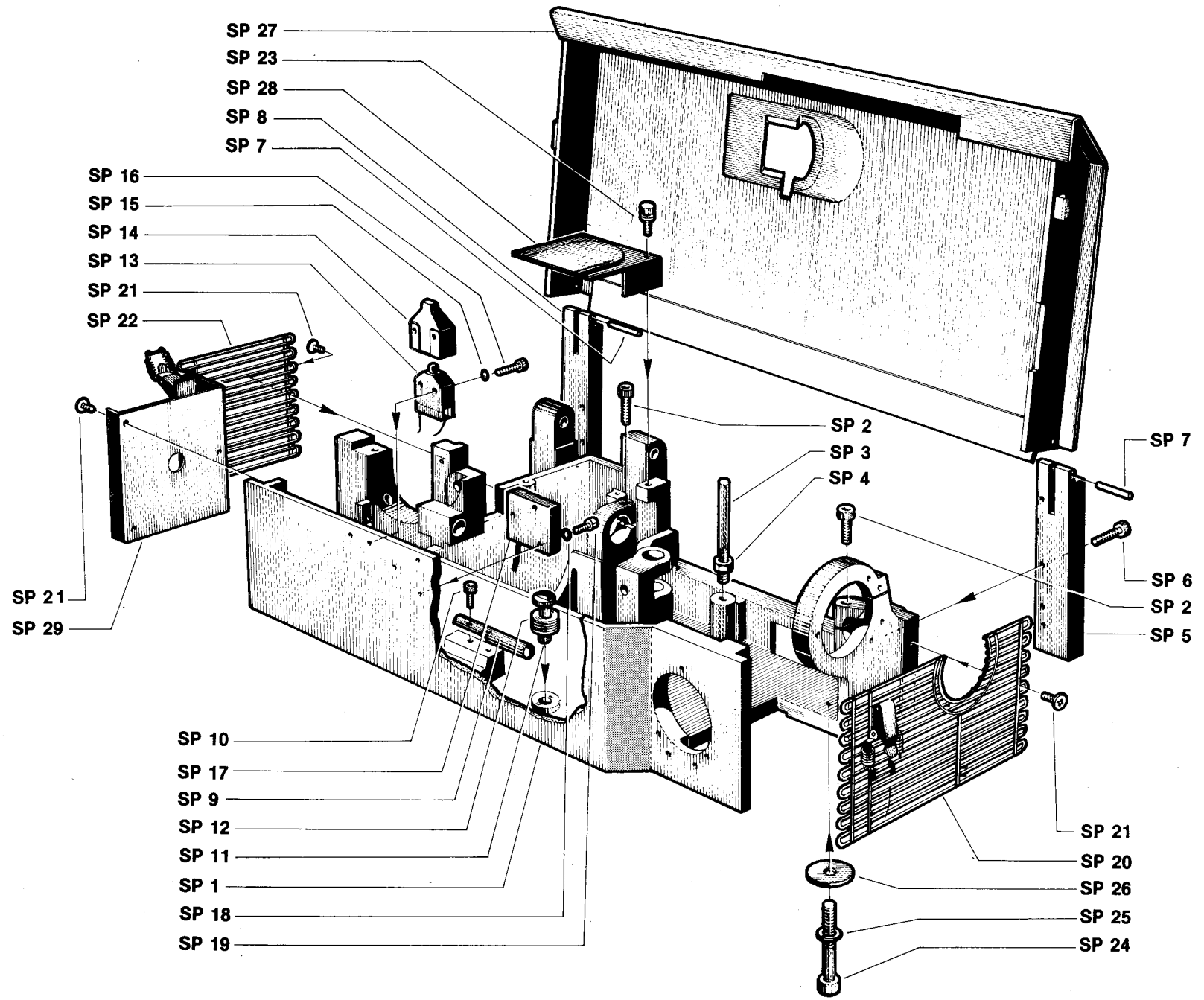
COMELZ_ITALIA
<http://www.comelz.com>

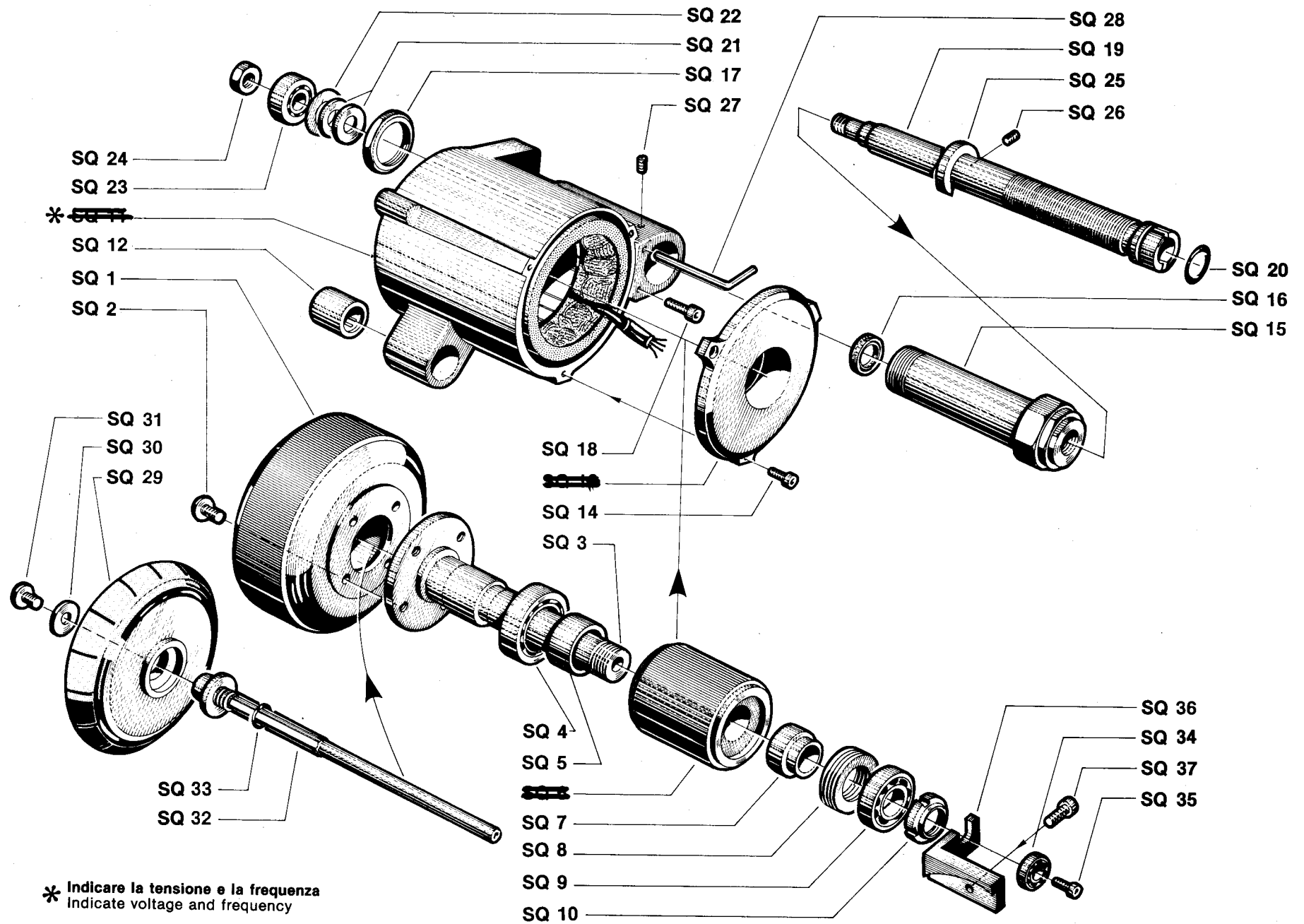
COMELZ s.p.a.
27029 Vigevano - Italia
Viale Indipendenza, 55

Telefono	+39 0381 42401
Telefax	+39 0381 42064
E-mail:	info@comelz.com



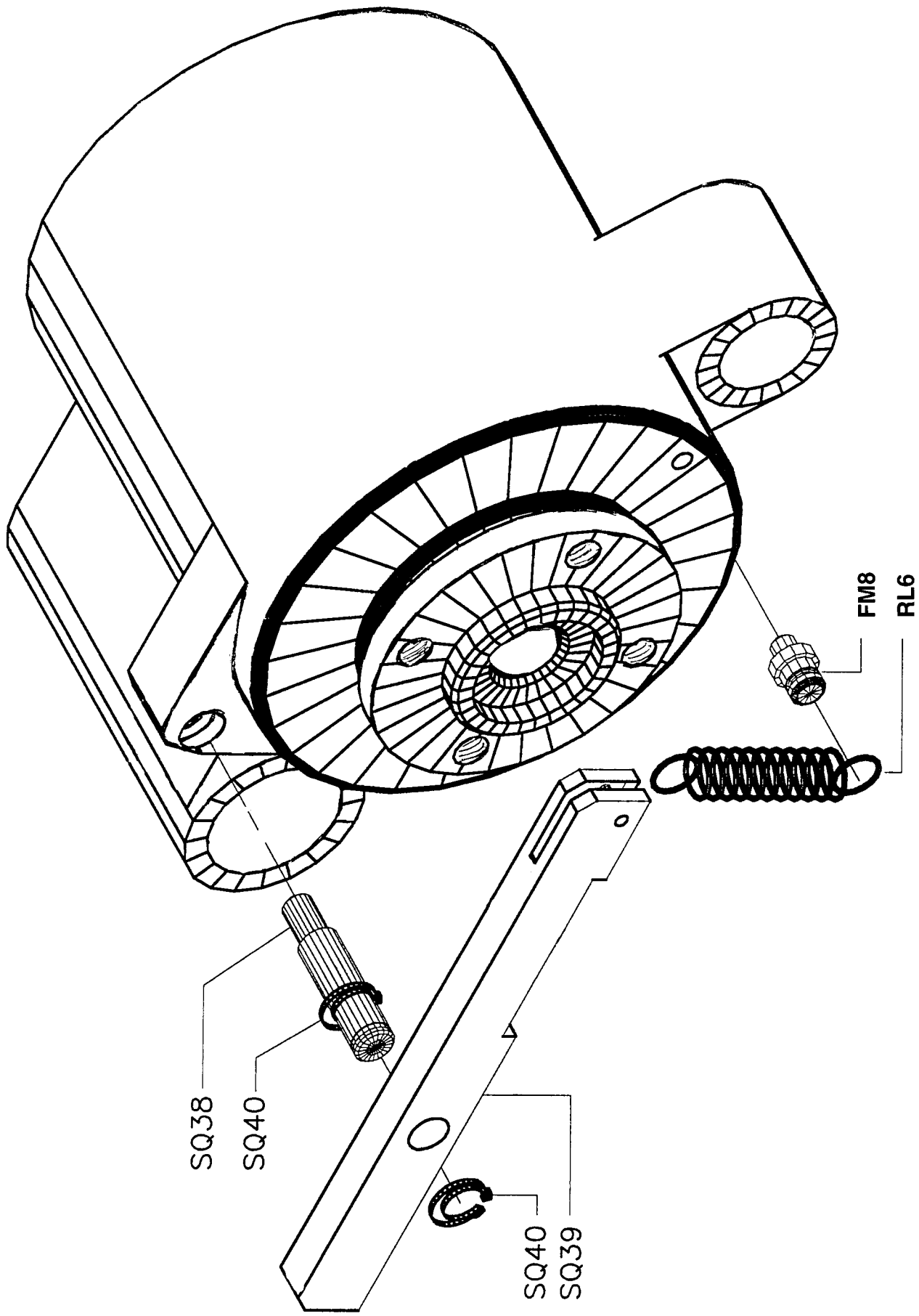
* Indicare la tensione e la frequenza
 Indicate voltage and frequency

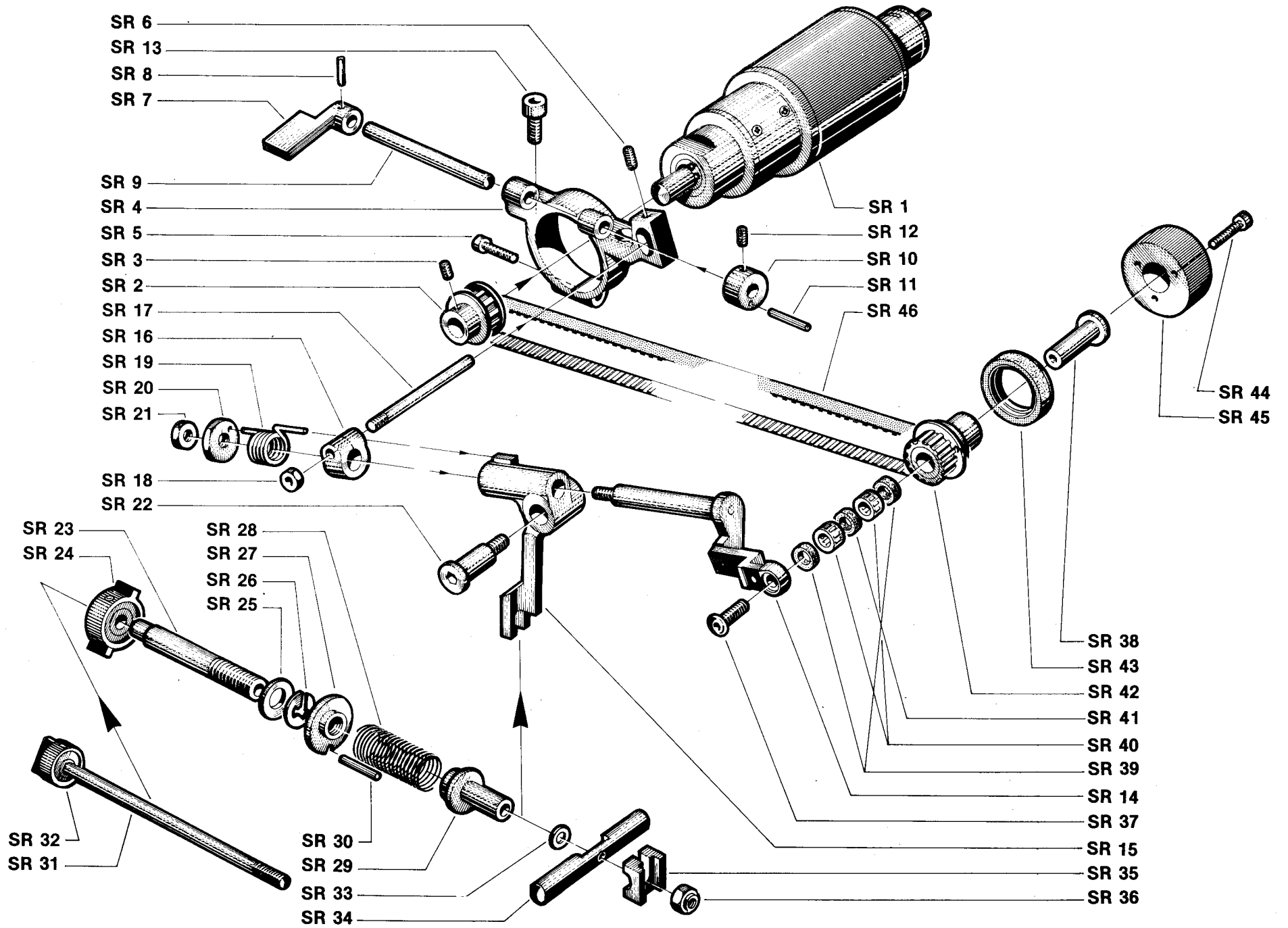


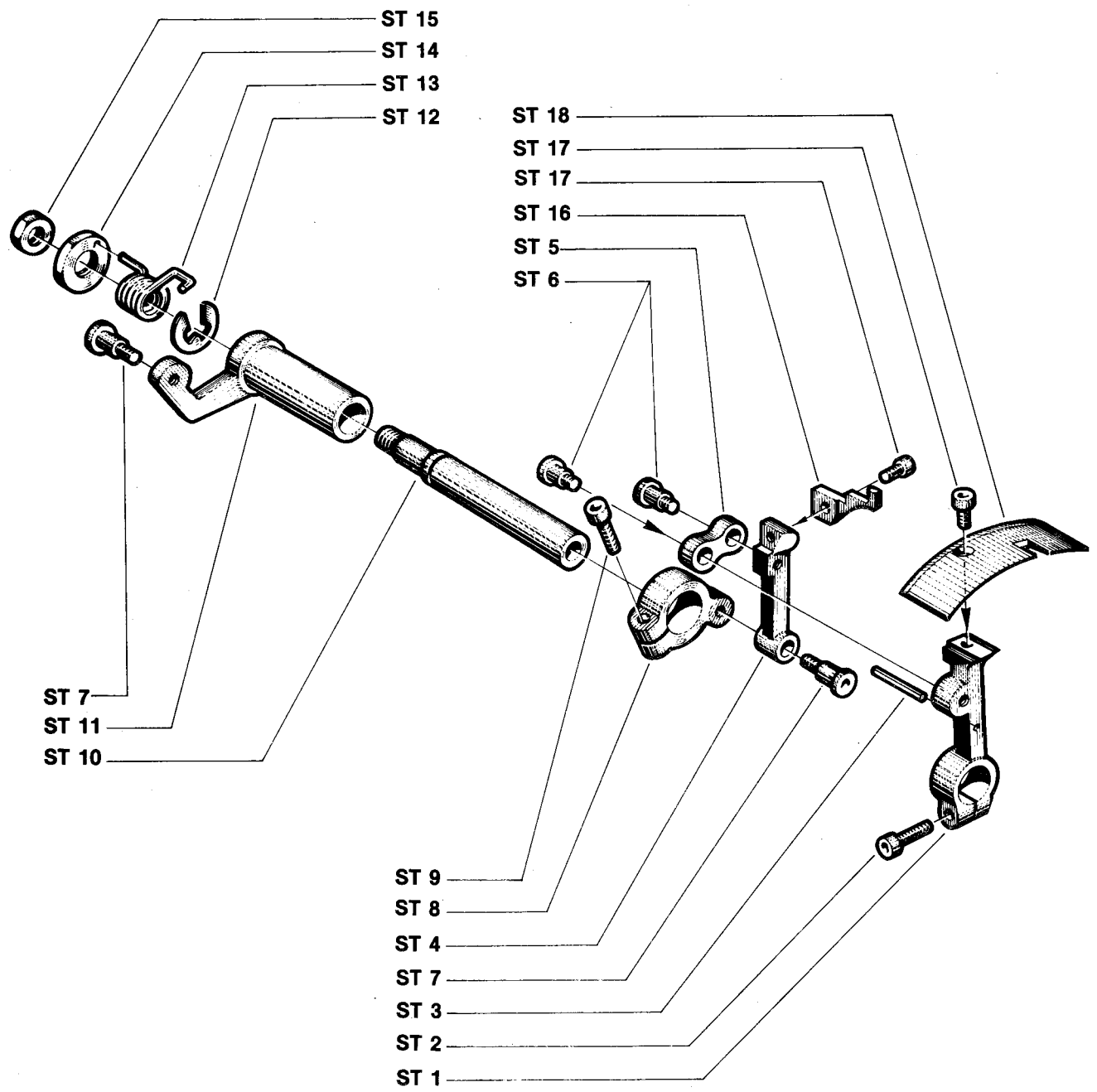


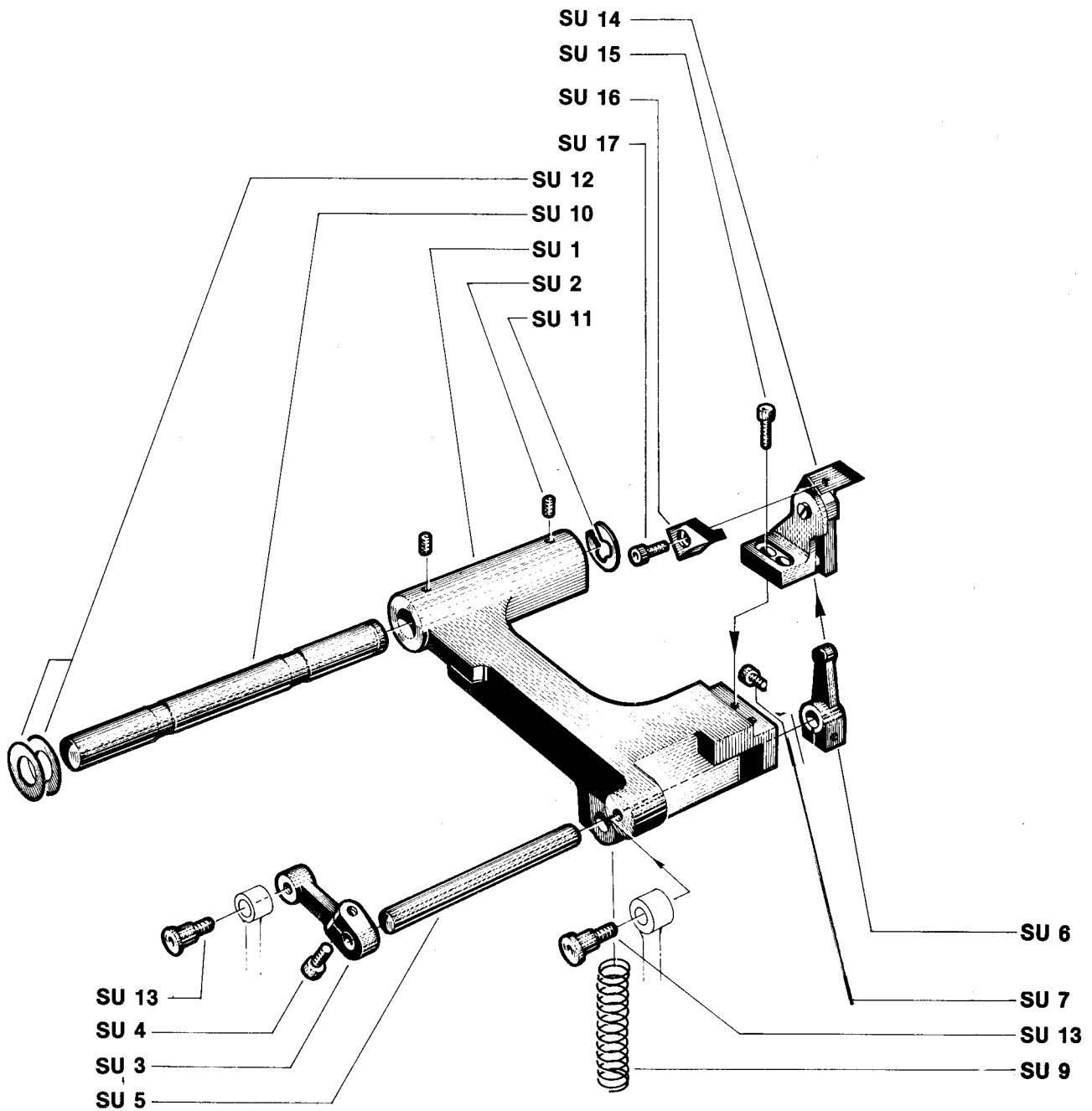
* Indicare la tensione e la frequenza
 Indicate voltage and frequency

SQ100 = motore completo
 motor assembly





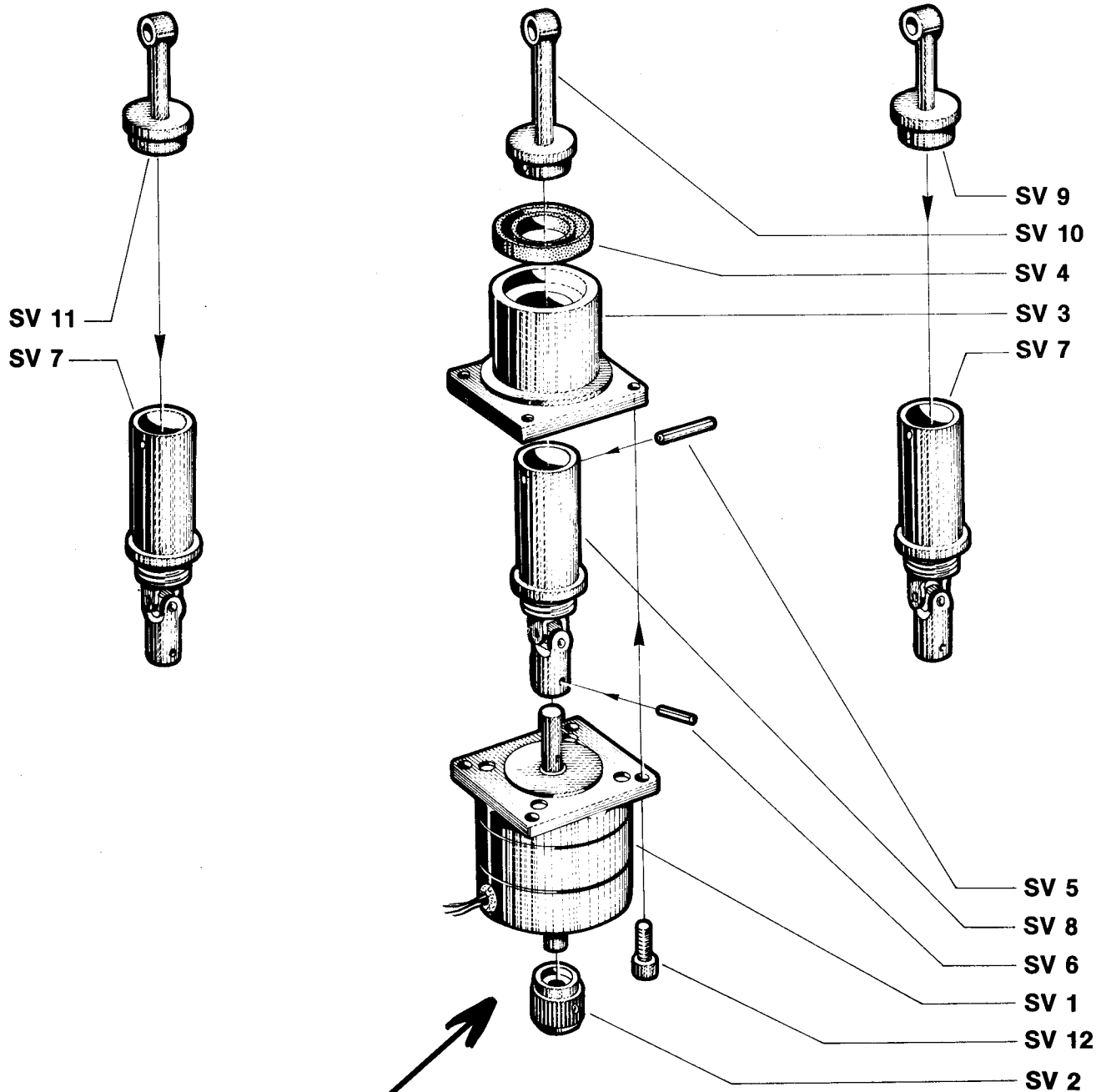




REGOLATORE ANGOLO
Angle control

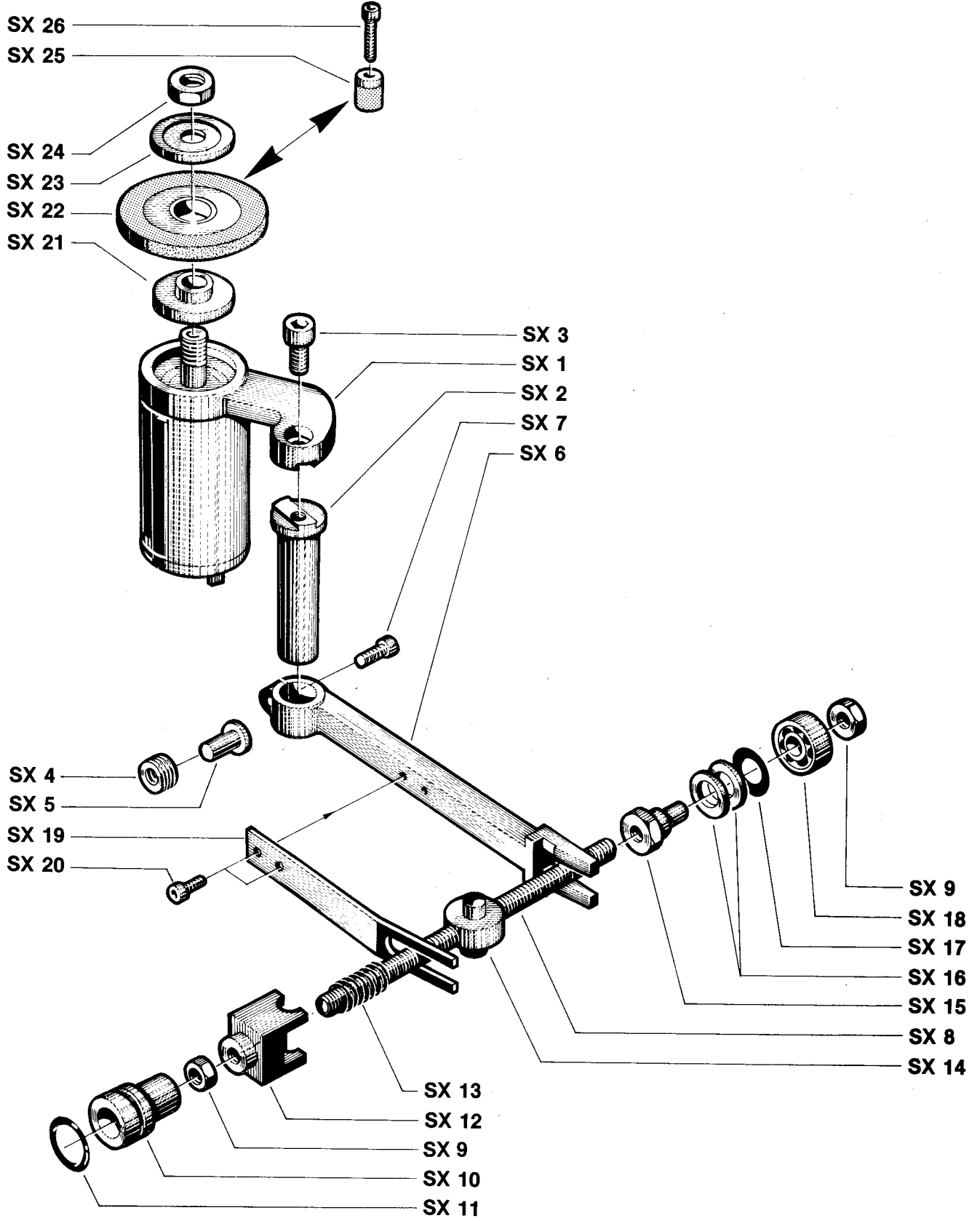
REGOLATORE ALTEZZA
Thickness control

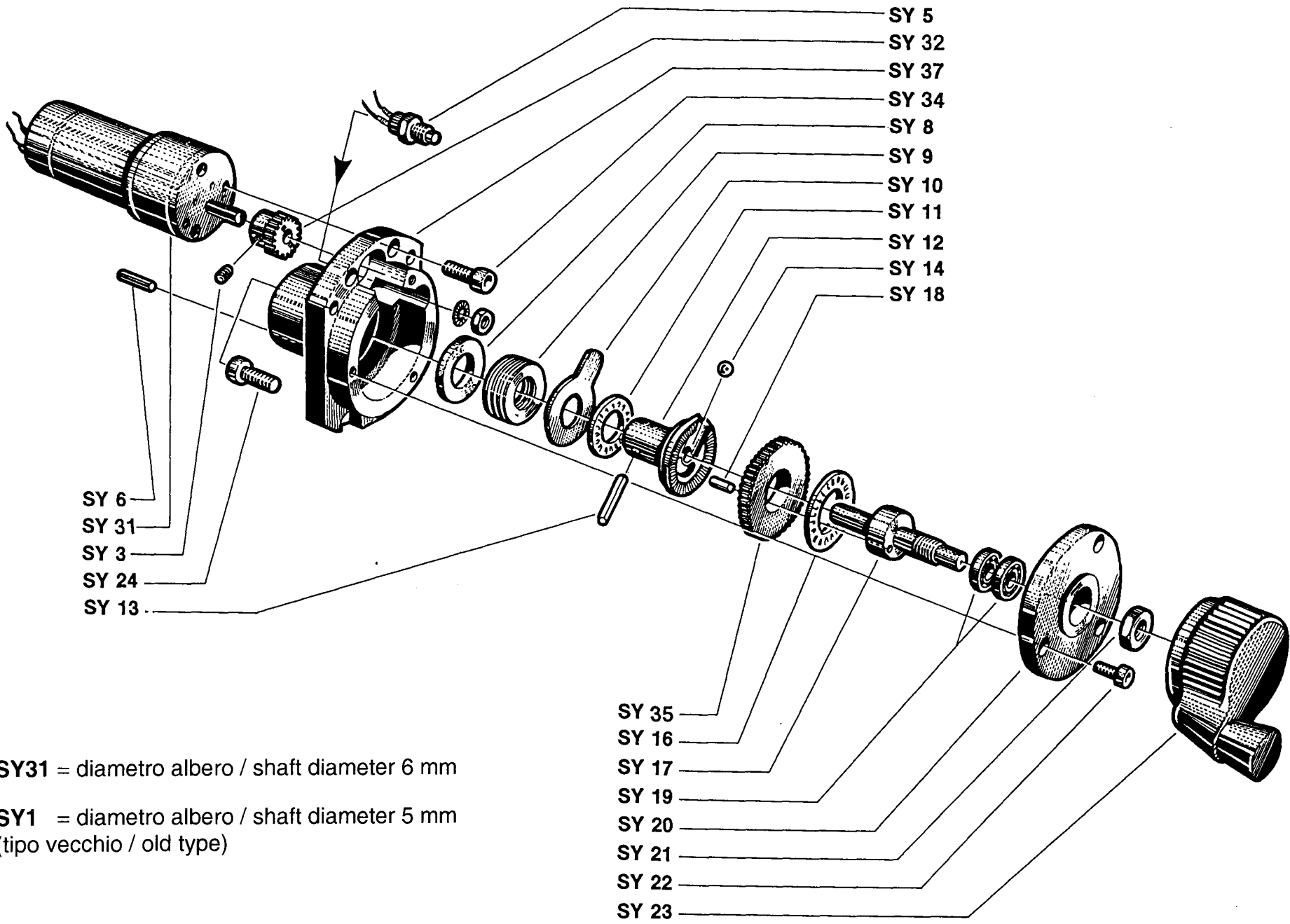
REGOLATORE LARGHEZZA
Width control



SV01.M = molla (4x)
spring (4x)

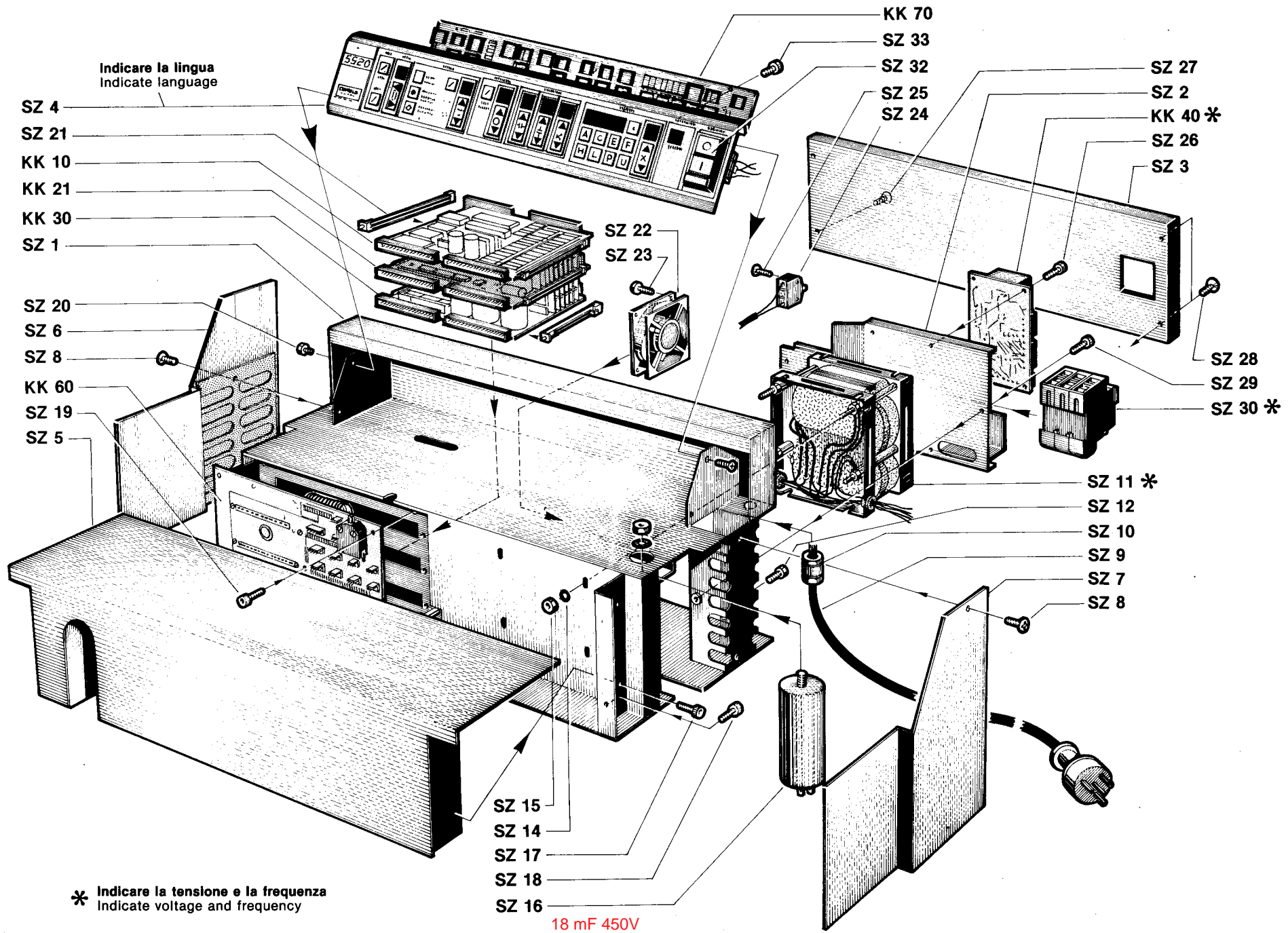
SV01.D = bussola di guida
guide sleeve



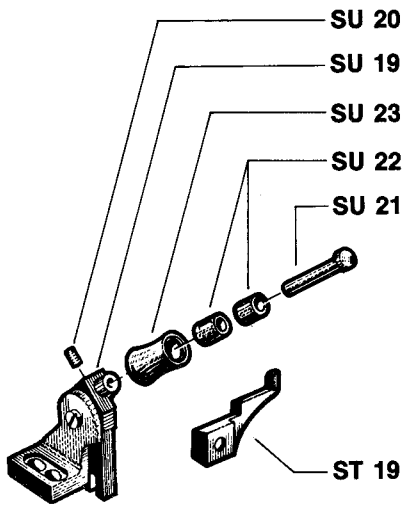


SY31 = diametro albero / shaft diameter 6 mm

SY1 = diametro albero / shaft diameter 5 mm
(tipo vecchio / old type)

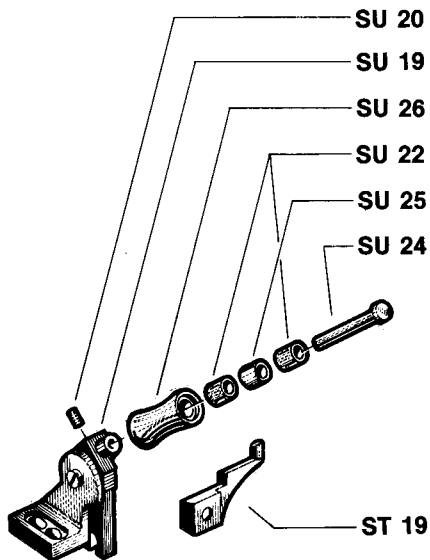


* Indicare la tensione e la frequenza
Indicate voltage and frequency



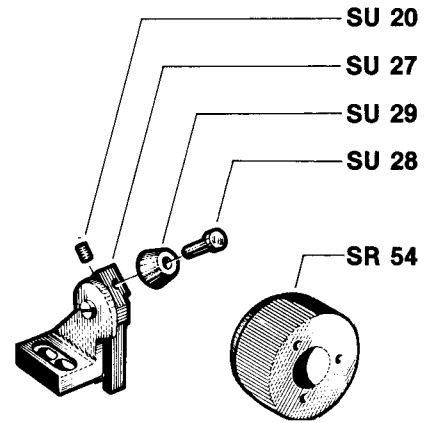
SU100

Gruppo piedino rotante L = 20mm.
Presser foot with roll L = 20mm.



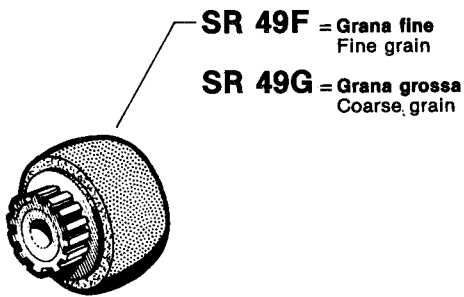
SU200

Gruppo piedino rotante L = 25mm.
Presser foot with roll L = 25mm.

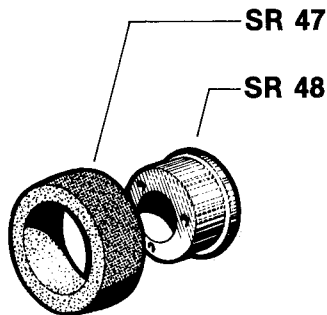


SU300

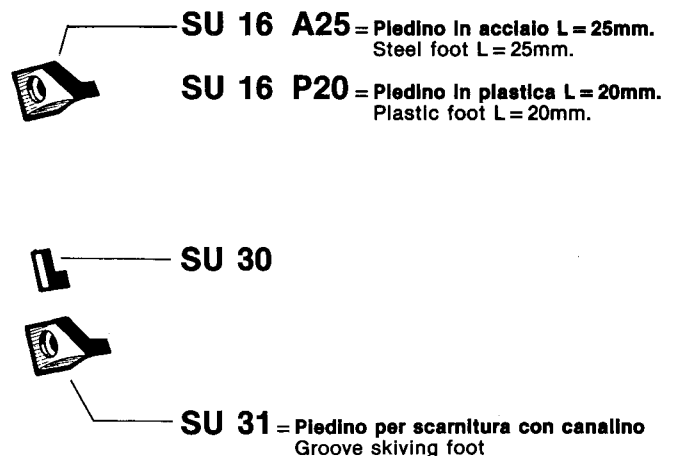
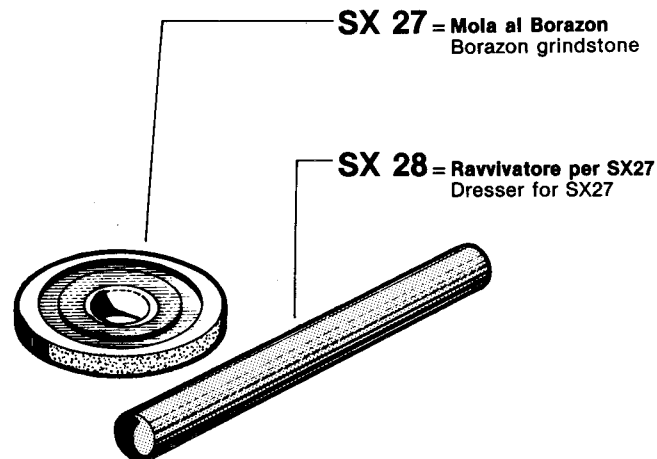
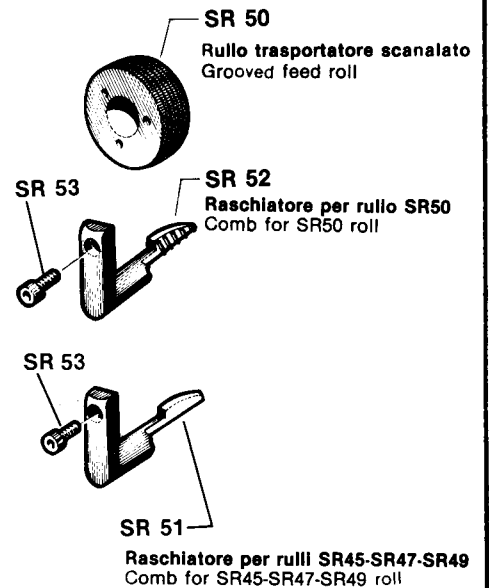
Gruppo per scarnire a 45°
45° skiving attachment



Rullo trasportatore in smeriglio
Emery feed roll



Rullo trasportatore in vulkollan
Rubber feed roll



IMPIANTO ELETTRICO SS20

Wiring diagram

